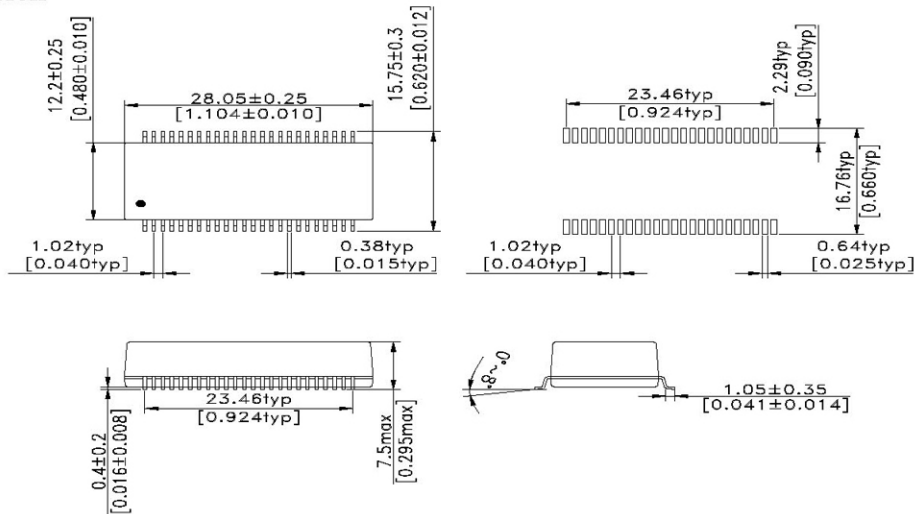


- ★ Designed to meet IEEE802.3ab requirement
- ★ Primary inductance 350μH min. with 8mA DC Bias
- ★ Operating temperature range: -0°C to +70°C
- ★ Reflow Condition :Maximum reflow temperature is 250°C/-5°C, time is 20~40 sec. (Refer to IPC/ JEDEC J-STD-020C standard).

Specifications						
Part Number	Insertion Loss (dB max)			Return loss (dB min)		
	1-30MHz	30-100MHz	100-125MHz	1-30MHz	30-80MHz	80-100MHz
AG4801S	-0.4	-1.0	-1.2	-19	-12	-10

Specifications continue				
Part Number	Turn Ratio	Cross talk (dB min)	Primary inductance: with 8mA DC Bias	Isolation Voltage (Pri TO Sec)
	(Pri : Sec) @100KHz	1~100MHz	@100KHz,0.1V	
AG4801S	1:1±5%	-30	350μH min	1500 Vrms/60 Sec

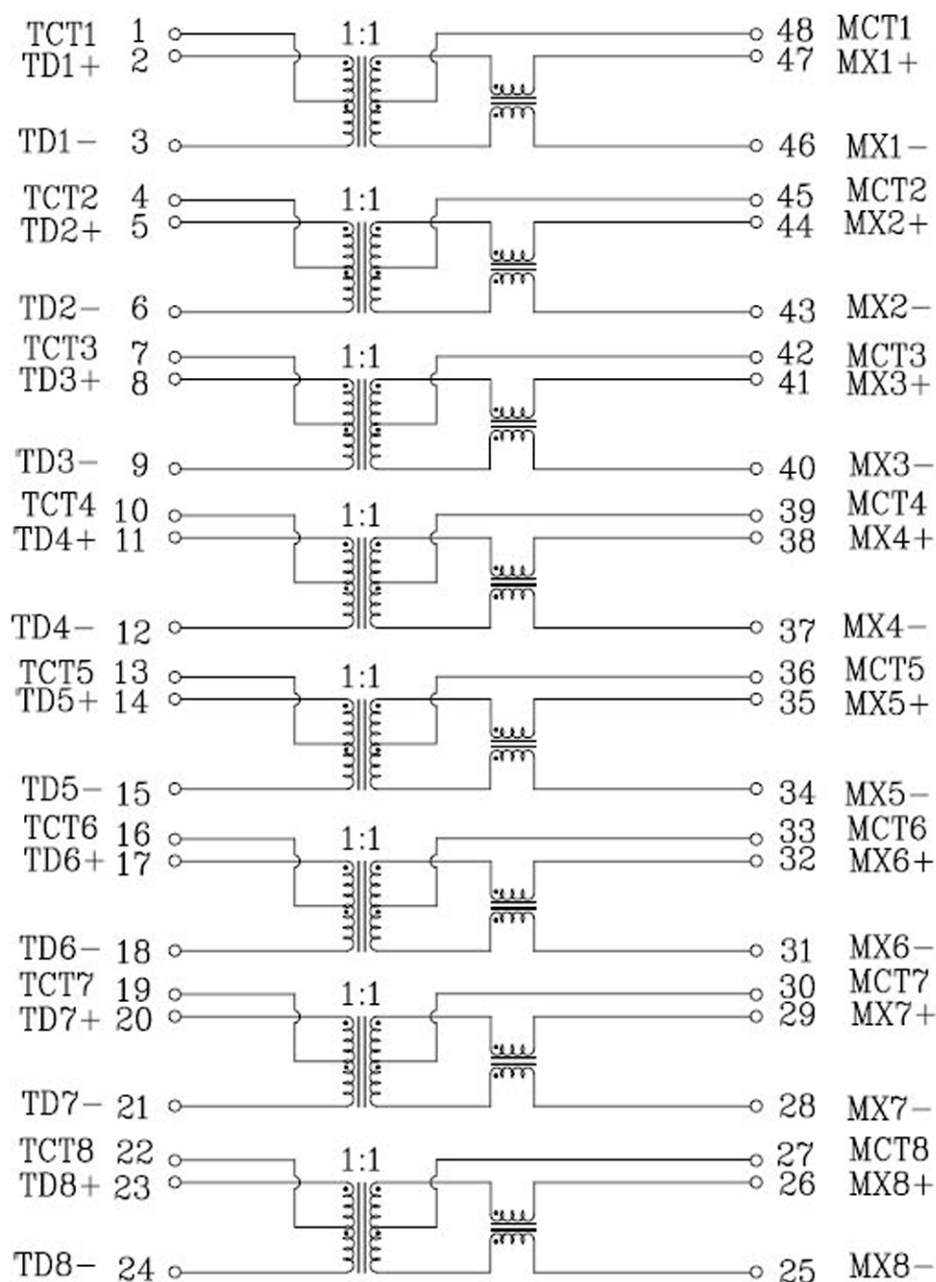
Dimension



Schematic

PHY Side

Line Side



MARKING

XXXXXX

● YYWW-####

Remark:

XXXXXX=PART NUMBER

YYWW-####DATE CODE, YY=YEAR、WW=WEEK

###=Control Code