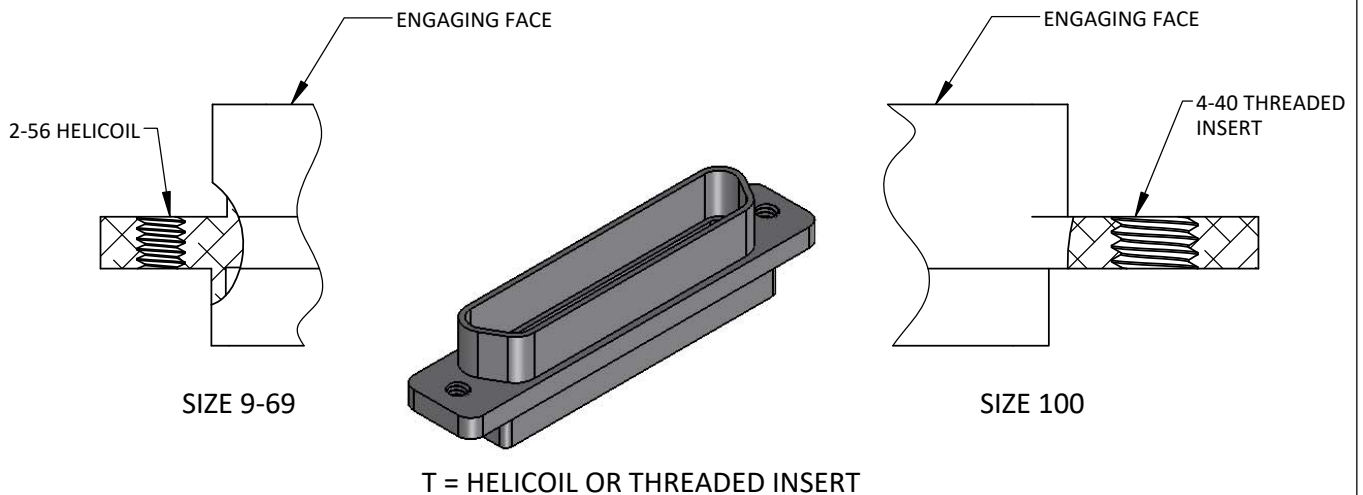


K = HIGH PROFILE JACKSCREW  
SLOTTED HEAD



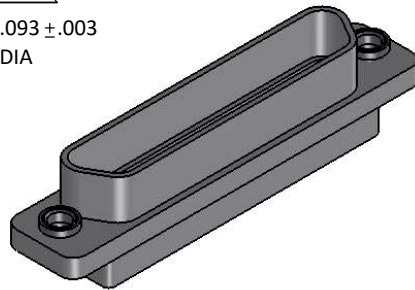
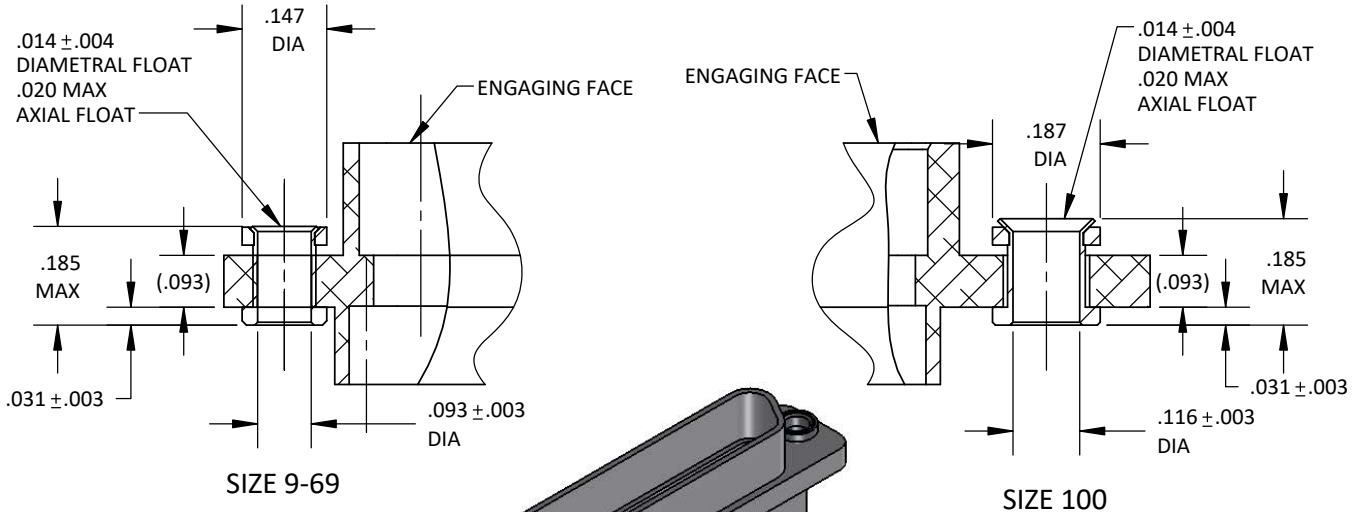
TOLERANCE: .XXX ±.005  
.XX ±.01  
ANGLE ±1°

TITLE  
NON-REMOVABLE HARDWARE  
CMD/CMA

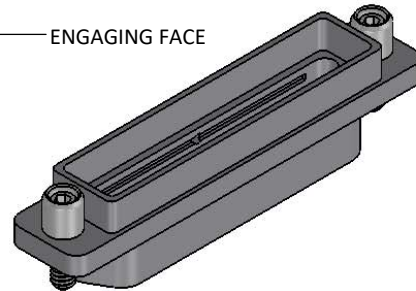
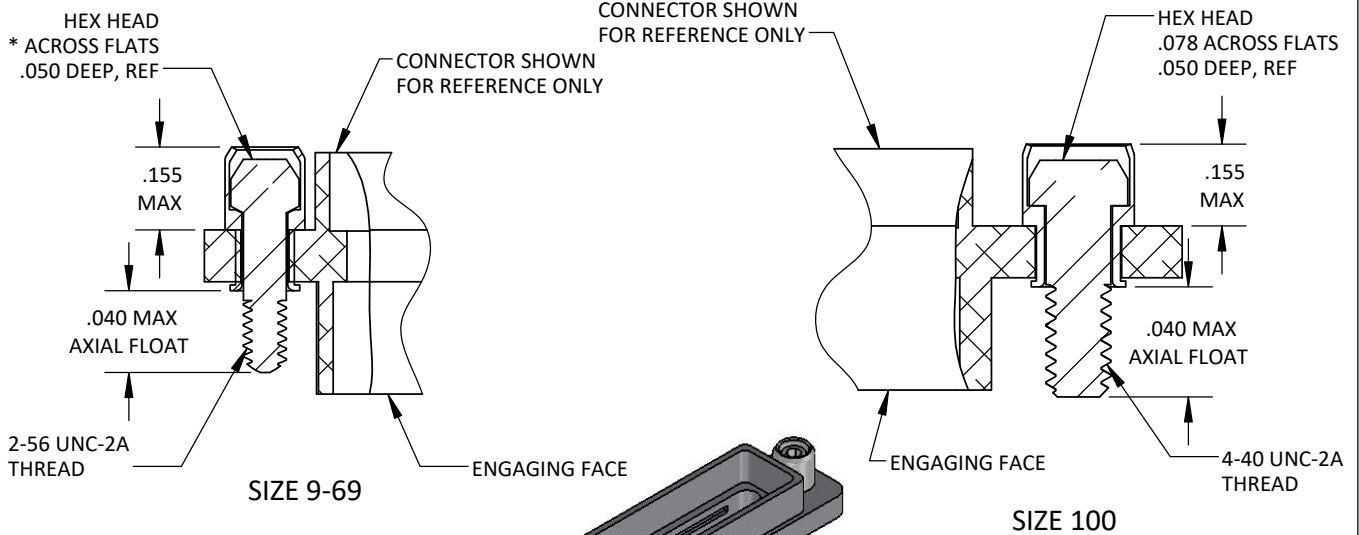
SHT 1 OF 2

DWG. NO.  
MICRO HARDWARE

REV  
G



F = FLOAT MOUNT



- \* L = LOW PROFILE JACKSCREW, ALLEN HEAD, .050 HEX
- \* M = LOW PROFILE JACKSCREW, ALLEN HEAD, .062 HEX

1. MATERIALS AND PERFORMANCE IN ACCORDANCE WITH M83513/05 AS APPLICABLE.

TOLERANCE: .XXX ±.005 .XX ±.01 ANGLE ±1°	TITLE NON-REMOVABLE HARDWARE CMD/CMA	SHT 2 OF 2	DWG. NO. MICRO HARDWARE	REV G
--	--	------------	----------------------------	----------